

U.S. Army Public Health Center

# Army Influenza Activity Report

Week ending 13 March 2021 (Week 10)

## Influenza Vaccination Coverage\*

As of 18 March 2021

94%	Army Active Duty
81%	Army Guard
90%	Army Reserve

\*Data Source: MEDPROS

Click to enlarge images.

## SUMMARY

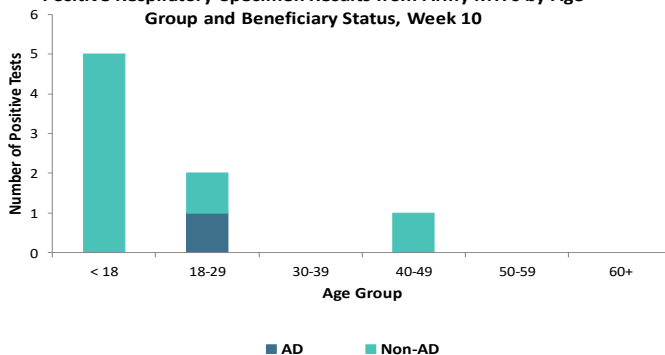
Influenza activity remains low in the Army population. Four positive influenza B specimens were reported during week 10, and three positive influenza A specimens were reported. No hospitalizations were reported in week 10; the season total thus far is four compared to 237 influenza-associated hospitalizations reported as of this time last season. Individuals younger than 18 were most affected by select respiratory illnesses in the Army population; 63% (n=5) of positive specimens were collected from this age group for week 10. Nationwide, influenza activity is low with 0.1% of specimens tested by clinical laboratories being positive for influenza.

## GEOGRAPHIC SPREAD

Data on the geographical spread of influenza is unavailable this season due to the COVID-19 pandemic. For information from previous seasons and additional information about nationwide influenza surveillance, please visit the Centers for Disease Control and Prevention's website by clicking [here](#).

## DEMOGRAPHICS

Positive Respiratory Specimen Results from Army MTFs by Age Group and Beneficiary Status, Week 10

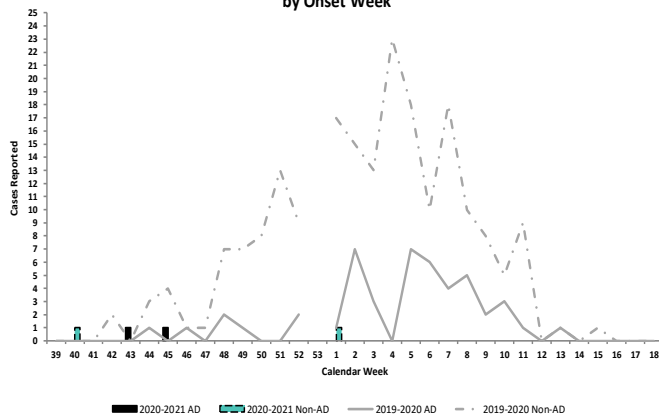


**AD:** One positive respiratory specimen was collected from an active duty (AD) Service member during week 10; the positive specimen was in the 18-29 age group.

**Non-AD:** Seven positive respiratory specimens were collected from non-AD individuals during week 10; 71% (n=5) were collected from individuals under 18 years of age.

## INFLUENZA-ASSOCIATED HOSPITALIZATIONS

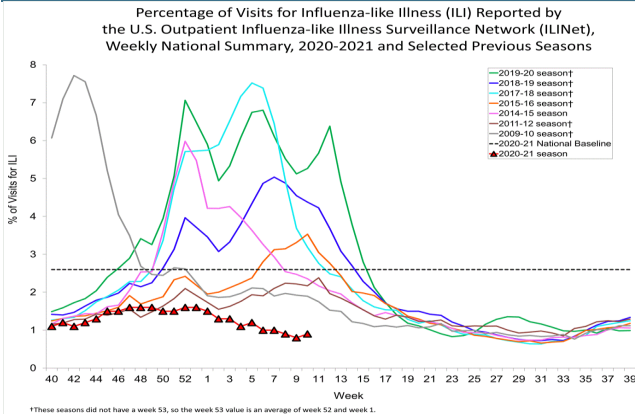
Army Influenza-Associated Hospitalizations Reported in DRSi by Onset Week



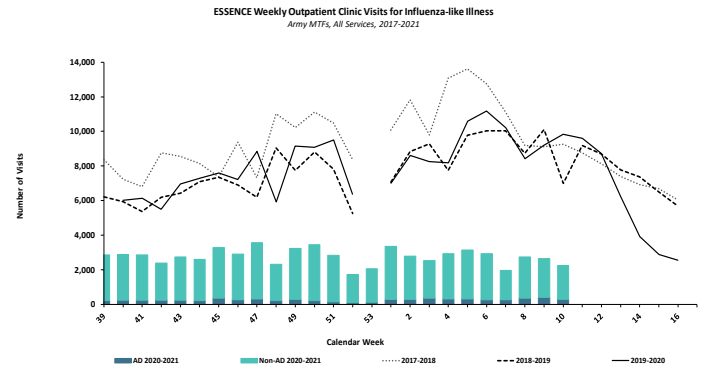
No influenza-associated hospitalizations with onset dates in week 10 were reported to the Disease Reporting System internet (DRSi); four hospitalizations have been reported for the entire season thus far. During the 2019-2020 season, eight hospitalizations were reported in week 10 (with 237 hospitalizations reported from start of the season through week 10).

\*DRSi does not capture cases older than 65 years old for influenza-associated hospitalizations.

### ILI ACTIVITY - UNITED STATES

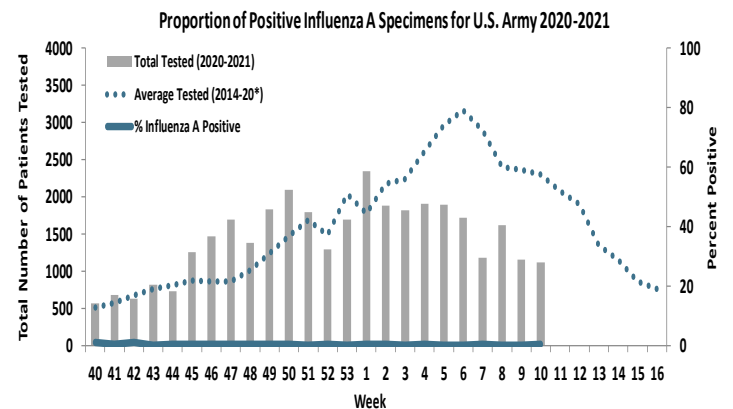
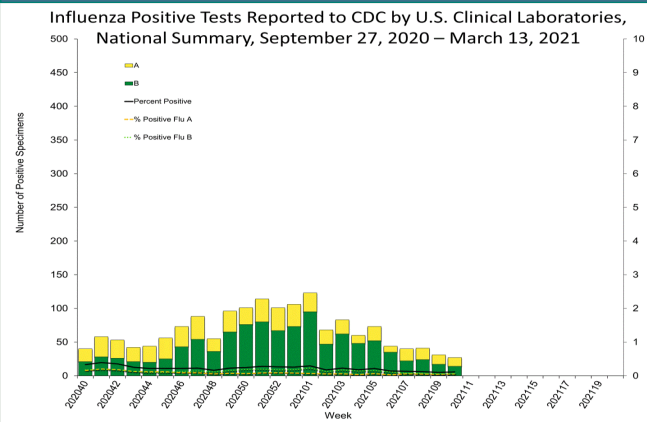


### ILI ACTIVITY - ARMY



Nationwide in week 10, incident ILI activity was 0.9%; this is below the national baseline of 2.6%. At Army medical treatment facilities, incident ILI activity decreased by 15% from week 9 to week 10. The majority of ILI encounters (86%) occurred among non-AD patients in week 10.

### LABORATORY RESPIRATORY SPECIMEN TESTING



Nationwide during week 10, a total of 23,618 specimens were tested for influenza by select clinical laboratories and submitted to the CDC; 27 (0.1%) were positive. Influenza B accounted for 51.9% (n=14) of the total positive specimens. In the Army population, three of the 1,121 specimens tested for influenza A were positive in week 10.

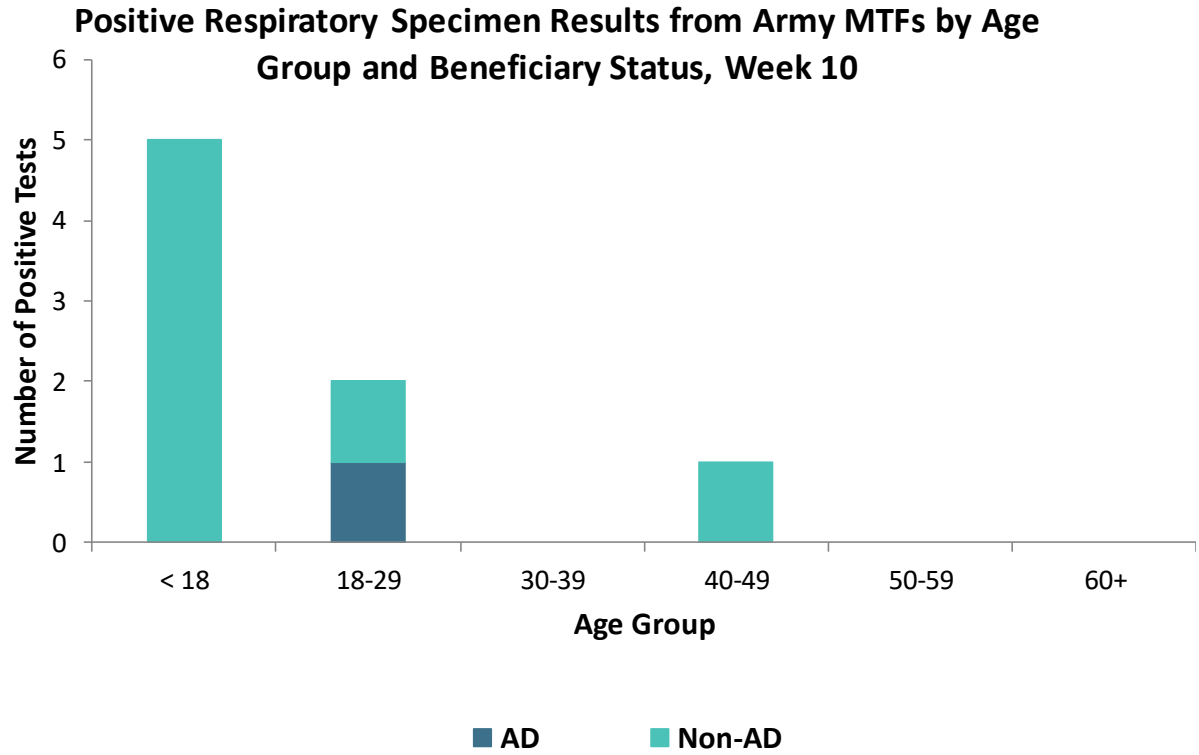
		Week 7	Week 8	Week 9	Week 10	Season Total
Army MTF Laboratory Results, 2020-21	Influenza A	3	2	2	3	83
	Influenza B	2	3	3	4	92
	Adenovirus	3	1	4	0	66
	Enterovirus	2	3	3	1	255
	Parainfluenza	0	0	1	0	10
	RSV	5	1	1	0	41
	Negative	3,066	3,974	3,244	3,051	82,935
	<b>Total</b>	<b>3,081</b>	<b>3,984</b>	<b>3,258</b>	<b>3,059</b>	<b>83,482</b>

Of the 3,059 specimens tested in week 10, less than 1% (n=8) were positive for any type of respiratory illness. Influenza B accounted for 50% (n=4) of the positive specimens, influenza A accounted for 38% (n=3), and enterovirus accounted for 13% (n=1).

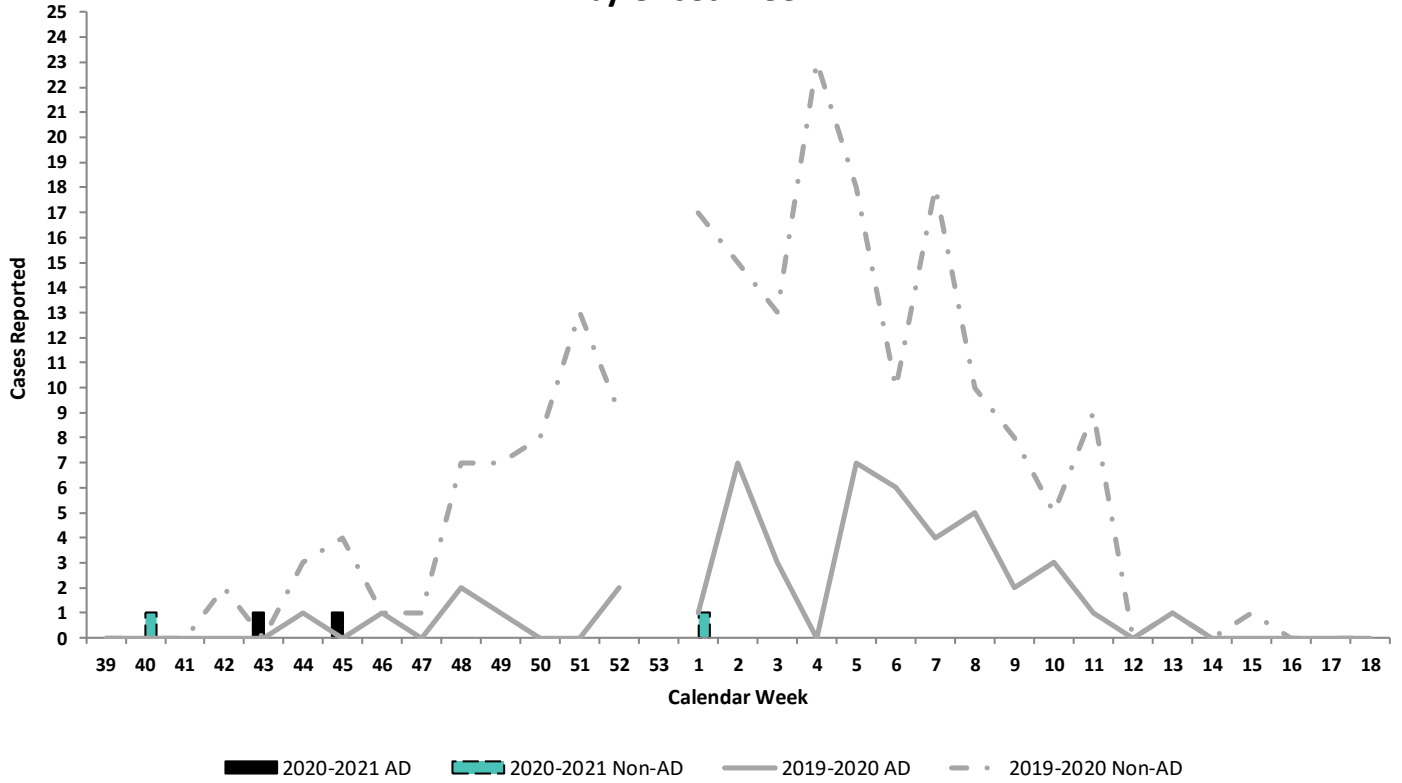
Additionally, the reported number of specimens tested decreased by 6% since week 9 (n=3,258).

**Locations providing week 10 laboratory data as of 16 March 2021:** Ft Belvoir, Ft Benning, Ft Bliss, Ft Bragg, Ft Campbell, Ft Carson, Ft Eustis, Ft Gordon, Ft Hood, Ft Jackson, Ft Knox, Ft Leavenworth, Ft Leonard Wood, Ft Lewis, Ft Polk, Ft Rucker, Ft Sam Houston, Ft Sill, Ft Stewart, Ft Wainwright, Korea, Landstuhl Regional Medical Center, Tripler Army Medical Center, and the U.S. Military Academy.





**Army Influenza-Associated Hospitalizations Reported in DRSi by Onset Week**

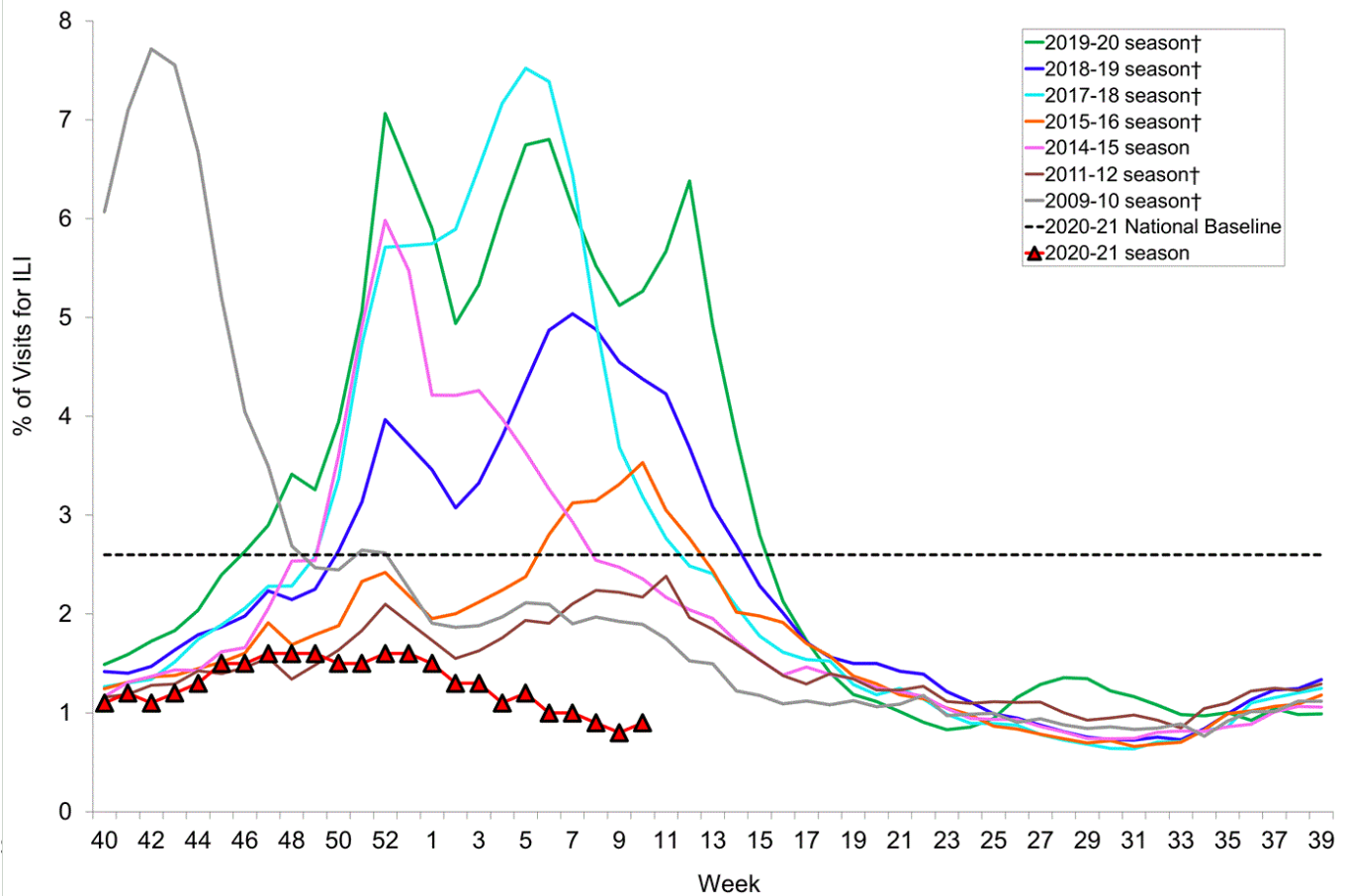


U.S. Army Public Health Center

# Army Influenza Activity Report

Week ending 13 March 2021 (Week 10)

Percentage of Visits for Influenza-like Illness (ILI) Reported by the U.S. Outpatient Influenza-like Illness Surveillance Network (ILINet), Weekly National Summary, 2020-2021 and Selected Previous Seasons



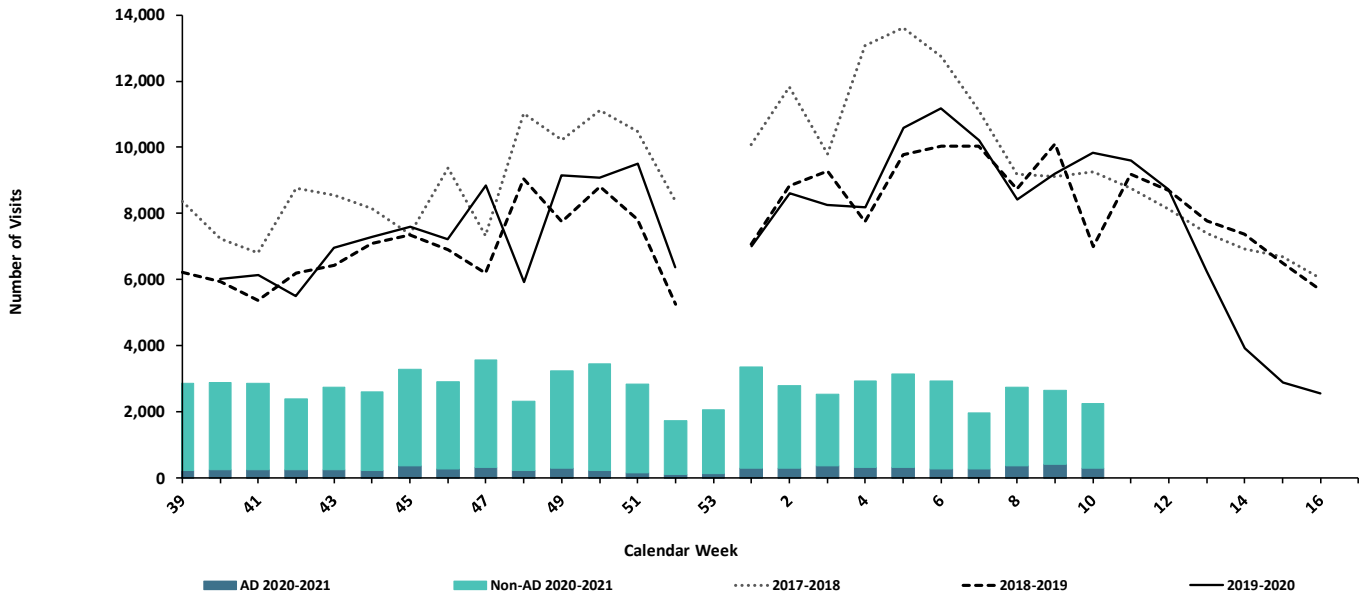
†These seasons did not have a week 53, so the week 53 value is an average of week 52 and week 1.





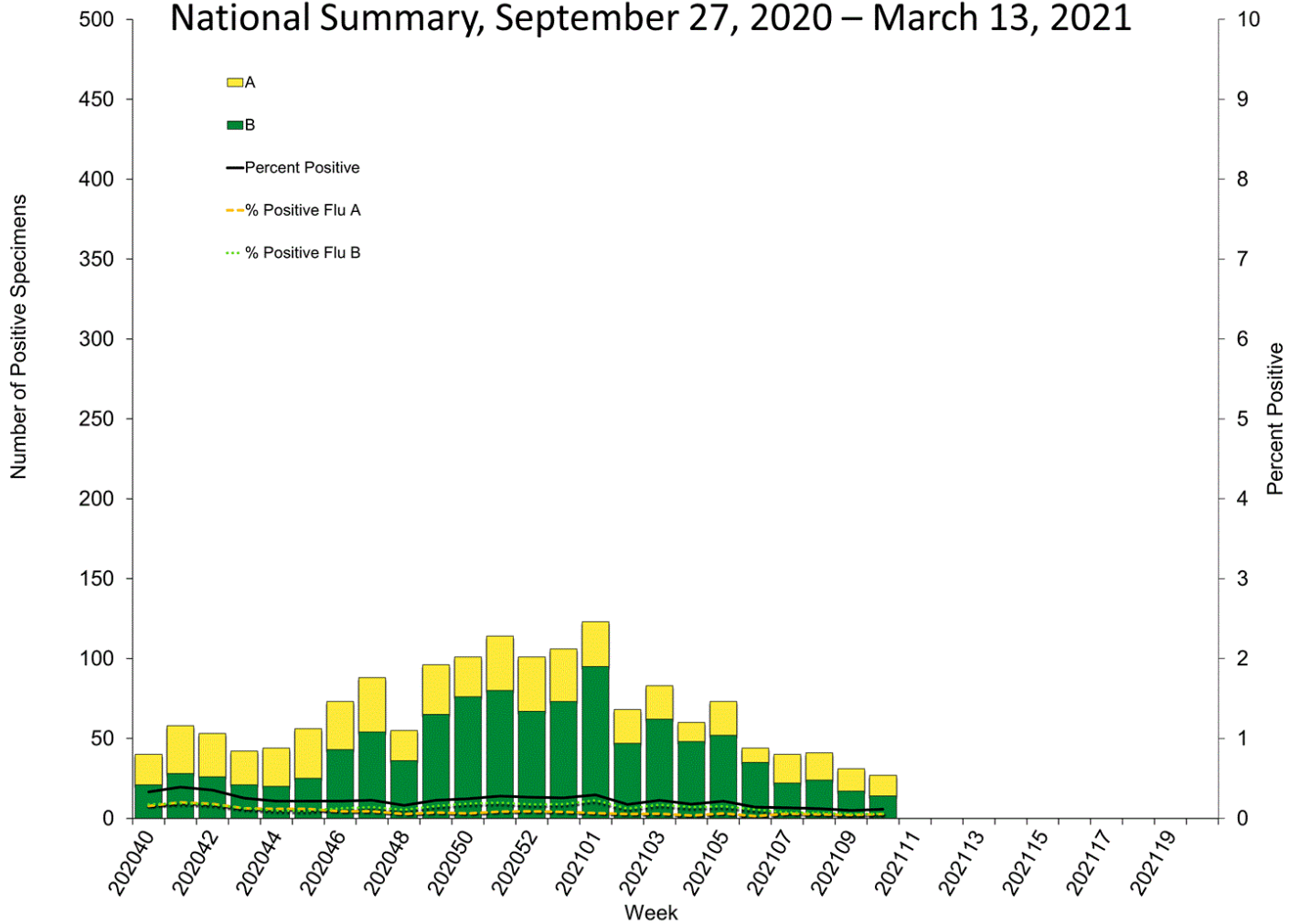
U.S. Army Public Health Center  
**Army Influenza Activity Report**  
 Week ending 13 March 2021 (Week 10)

**ESSENCE Weekly Outpatient Clinic Visits for Influenza-like Illness**  
 Army MTFs, All Services, 2017-2021



U.S. Army Public Health Center  
**Army Influenza Activity Report**  
 Week ending 13 March 2021 (Week 10)

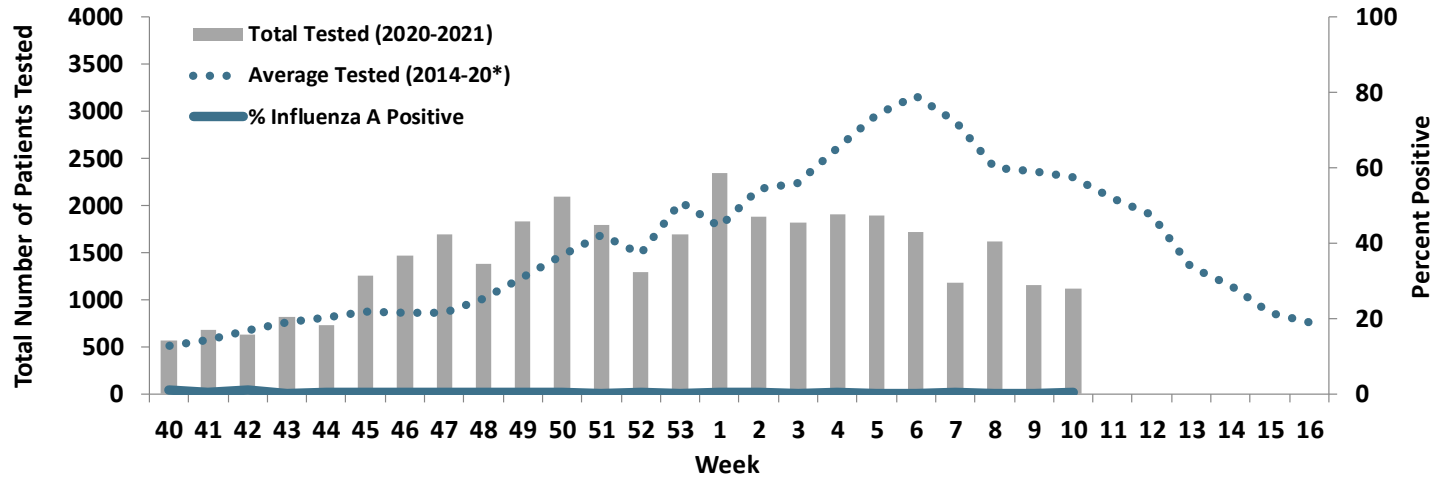
**Influenza Positive Tests Reported to CDC by U.S. Clinical Laboratories, National Summary, September 27, 2020 – March 13, 2021**



Source: Centers for Disease Control and Prevention (CDC)



**Proportion of Positive Influenza A Specimens for U.S. Army 2020-2021**



\*2014/2015 influenza season - 2019/2020 influenza season